

Cassels Communicator



Spring 2018

Inside

President’s Message.....1-3

Directors’ Corner.....4-7

Membership & Communications.....8

Fishing Violations9-10

Forest Management Plan.....11-12

Municipal Watch.....13

Health Warning.....14

2017 AGM Thank You.....15

Classified Ad Info.....16

Executive List/ CALA Mission Statement17

Community Info 2018.....18

President’s Message

Hello everyone. My name is Sue Olynyk and I am your new CALA President. My husband Peter is now your Past President after having served as Pres for the last three years. That in fact was his second run at being CALA Pres, the first way back in the mid 1990s.

First let me apologize for the delay in issuing this newsletter. Your CALA executive saw some major changes during the past summer, and we kind of fell “out of the groove”. Nevertheless, those changes were very positive as we welcomed four new members to the Executive:

- Daryl Bell – Fishing Director
- Adrian Cobbold – Secretary
- Donna Macintyre – Forestry Director
- Paul Middleton – Communications Director

All four are very keen to continue with the fine work that CALA has been doing for many years.



President's Message continued.....

We would like to recognize and thank the following folks who completed their terms, some with many years of dedicated service:

Kaye Barrett – Communications Director
Chad Armstrong – Fishing Director
Jim Vance- Past President
Jamie Vance - Secretary
Dave Zimmerman – Forestry Director

By the way, we are still looking for a Vice President in case you feel the urge to serve. I promise to do my best in working with the fine group of individuals who form our executive, to address the concerns of all residents of our lakes and ensure that CALA's voice remains strong and is heard always.

So, let's start with the summer just passed; there's an old saying that a rainy day at the lake is better than a sunny day at the office. But this summer really tested our resolve. I think we were into August before we saw three sunny days in a row. It was warm enough mind you, however a walk through the forest required rubber boots until fall was almost upon us. On the positive side, it was a great growing season, and the forest fire threat was way down. And even more on the positive side, it was a fabulous fall; beautiful days, cool evenings. In fact, I was swimming on the Thanksgiving Day weekend. Can't say that happens very often. I retired back in mid June after a 40-year career at Dofasco in Hamilton. That allowed Peter and I to stay north for about 5 months. It was tremendous, although it didn't feel that long looking back on it now.

We have several successes to be proud of this past summer. Just to name a few:

- Water front improvements were completed at Net Lake. The boat launch ramp received a new precast surface. Users tell us the new ramp works very well and is a tremendous upgrade.
- Similar improvements were completed on the access point at the south end of Rabbit Lake. Here a new poured concrete ramp was installed making the existing facility wider and longer. Once again this is a vast improvement over what was there. And once again CALA played a key role in the success of these repairs.
- The Town tells us that a precast ramp will be installed at the Cassells Lake launch ramp in the spring of 2018.
- The Annual CALA BBQ (this year it was corn and sausages), Boat Poker Run, Silent Auction and Annual General Meeting were tremendous successes. It was a gorgeous day, and the event was very well attended. Special thanks to Lil and Rene at TBL for hosting the event again this year, and for being a key part of the planning and staging of the day. Also a special thanks to Brian Koski from Town Council who attended and made a brief presentation at the AGM, Greg Feys and Cindy Dougall, your CALA Directors who organized the day and Paul and Sally Middleton who ran the silent auction.
- CALA attempted its first ever "Dock Sale" on the July 1 weekend. Although the event was not all that successful, we learned a few lessons and will return undeterred in 2018 with another attempt.
- CALA received another \$4,000 grant from the Town to purchase and install more marker buoys and navigational aids to make our waterways safer and easier to navigate.

(President's Message con't)....

- The Town accepted our gift of a red maple to be planted in front of the Train Station as soon as possible in the spring of 2018. This gift was to commemorate Canada 150 and hopefully start a trend to “green” the downtown core
- The railway crossing on the Rabbit Lake Road was rebuilt in the fall. New ties, ballast and grading now make these tracks much easier to cross. CALA played a significant role in influencing and coordinating these repairs with our membership.
- The CALA water testing program successfully continues under the guidance of Director Chris D’Aoust. The results are encouraging. See Chris’ report inside this newsletter.

On the “not so bright side” of the news:

- Destructive caterpillars were out in force last summer, stripping many poplar trees of their foliage. By the end of the summer however, it appeared that many of the poplars had regrown their leaves. We’ll hope for the best.
- The unwelcome news is that illegal fishing practices continue on our lakes. The good news is that two offenders were caught, charged and successfully convicted. Read the story later in this newsletter.

CALA strongly advises you to ensure that your fishing licence is current and that you know what your legal possession limits and sizes are!

On June 29, 2017, the Sudbury Star reported on a Sudbury and District Health Unit warning about exposure to a fungus caused infection that, if left untreated, could prove fatal. Read the article later in this newsletter.

If your house is like our house, your Rubbermaid totes have been hauled out of the basement, they’re being filled with items going north and the stacks near the front door are growing. This and the recent Spring Cottage Life Show, an absolute must for us, are sure signs that the ice out can not be far off. See you at the Lake!

WEBSITE UPGRADES

The CALA Website will undergo major renewal this spring.

Working with our webmaster, Brent Shea, we are planning to bring more functionality into the site. Most exciting of all will be the creation of a public face and a members-only side, that will include the ability to pay your membership on-line. Stay tuned!



MARK YOUR CALENDARS!



Executive Meetings- all members are welcome to attend

Sunday, May 20

9:30am at the Temagami Health Centre

Saturday, June 30

9:30am at the Temagami Health Centre

Friday August 31

9:30am location to be confirmed

Boat Poker Run, Corn Roast and Annual General Mtg

Sunday August 5

Temagami Boat Livery to be confirmed

CALA Dock Sale

Saturday July 14

Rain date Sunday July 15

Directors' Corner



WATER QUALITY REPORT

March, 2018

Happy spring to all CALA members and wishing you all a great 2018 season in the Temagami region. In 2017 we continued microbiological testing to determine levels of E coli and total coliform bacteria. Random sampling of 5 locations, 2 from Cassels, 2 from Rabbit and one from Obashkong. I am pleased to report that all results from the 5 locations taken in mid July and a second sampling end of August indicated bacteria levels well below the guidelines for recreational lakes in Ontario.

Further testing conducted in 2017 was a detailed analytical chemistry analysis to determine concentrations of nutrients, anions, carbon and total metals. This analysis was conducted by ALS Labs in Waterloo, Ontario. Two samples were selected, one from the middle of Cassels Lake and one from Lake Obashkong.

Detailed results of the elements tested for will be available on the web site in the near future. Summary comments from the ALS lab are as follow:

The parameters that we analyzed for are not very specific to environmental concerns but some of the information in the report can be compared to environmental guidelines.

Two of the parameters flagged are Aluminum and Copper. These are both slightly above the Provincial criteria; however, the Aluminum is contingent on the pH. The criterion for water with a pH of 4.5 to 5.5 is 0.015 mg/L but your water has a pH of 7.5-7.6; therefore, the criterion is changed to 0.0075. So there is no actual issue with these samples because your results are below this. A similar situation arises with the copper result. The criterion for copper is contingent on the hardness of the water. Your samples have a hardness above 20 mg/L CaCO₃; therefore, the actual criterion for copper is 0.005 mg/L and both of the samples are below this. The next parameter to be flagged is total phosphorus. It is highlighted but that is because the detection limit of our ICP phosphorus scan is above the criterion. The raw data shows you results to be 0.002 mg/L and 0.005 mg/L which are below the criterion of 0.010 mg/L.

The possible sources of nutrients from land run-off or sewage are not present. The nitrates, ammonia and ortho-phosphorus are all not detected.

Overall, the parameters tested which can be compared to the Surface Water Objectives for Ontario, showed no exceedances.

In summary, we do not see any concerning levels of metals or chemical compounds of concern from the extensive list tested. We do not see any significant variation from the sample taken in Cassels vs the sample from Obashkong. This data will also serve as a baseline reference regarding the current chemistry status of our lake system.

Again, wishing everyone a safe and active cottage season on the CALA lakes in 2018.

Chris D'Aoust

CALA Water Quality Director

****If you are interested in the full ALS report, it will be posted on our website!**

www.tcala.com



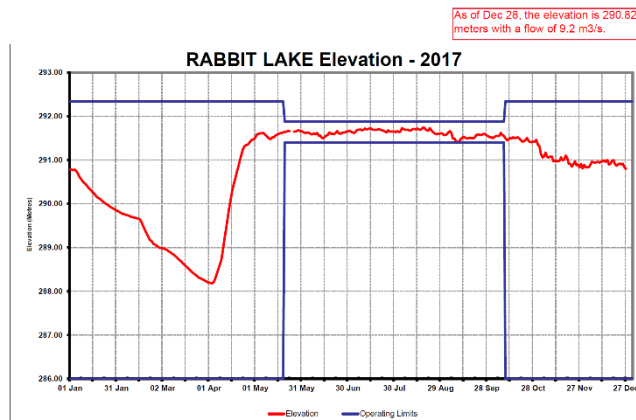
Water Management

Sue Olynyk

Water levels on our lakes are the result of many contributing factors. These include:

- Precipitation (or lack of it)
- Snow build up in the bush in the winter and the moisture level in the snow.
- The rate of spring thaw (affecting the absorption into the soil or runoff into streams and lakes)
- The control of the Rabbit Lake Dam by Ontario Power Generation (OPG)

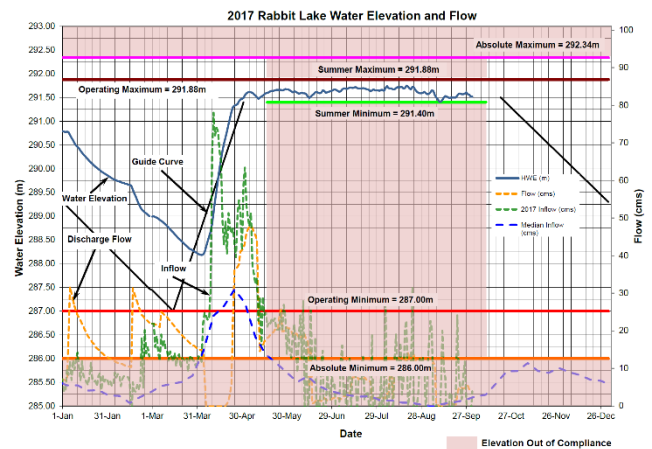
During 2017 water levels on the lakes fell within the target bandwidths. More importantly for many of us, the water level was into the summer operating band well ahead of the Victoria Day weekend and remained there for the balance of the summer season.



Ontario Power Generation, Dam Safety and Water Resources Division
"as collected" data

as of 12/28/2017

From a more detailed look at the first two thirds of 2017, you can see when logs were removed from the dam (the discharge flow increases—orange line). You can also see the inflow (green line) rising rapidly in the spring when the freshet (spring melt) and spring rains occurred.



283-08410 1--0026

6

Matabitichuan River Water Management Plan

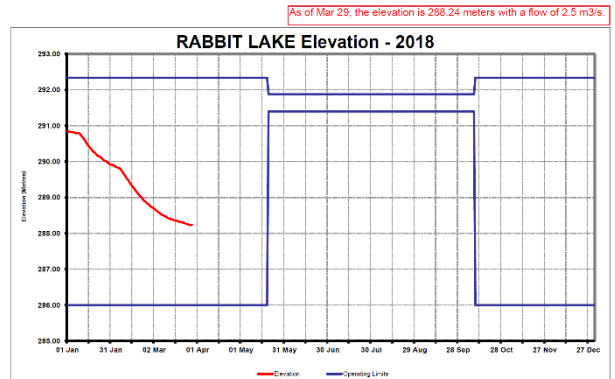
Water management on our lakes occurs under the auspices of the Matabitichuan River Water Management Plan. This plan exists under OMNRF's legislative authority from the Lakes & Rivers Improvement Act.

In recent meetings, the Stakeholder Advisory Committee of the Matabitichuan River Water Management Plan received reports from both the Ontario Ministry of Natural Resources and Forestry (OMNRF) and OPG.



OMNRF discussed that the Net Lake Dam had been slated for repair Summer 2017. After being tendered there were no bids on the project. Due to high precipitation in the summer of 2017 temporary repairs were made with sand bags. MNRF engineers were considering possible solutions for the Net Lake Dam for the summer of 2018. Sandbagging is helping until permanent repairs can be made. A new request for bid will go out with desired timing for the work to be accomplished July/August 2018. As part of this work, data loggers will be installed. These will provide accurate water level readings.

Major repairs are scheduled for the Rabbit Lake dam in the summer of 2018. Pending approvals and a fisheries study, the old cribbing and timber structure of the dam will be removed. A new steel and concrete structure that is anchored into bedrock will replace the old gravity dam. Two sluices will be replaced by three sluices for better water management. There will be no expected alteration or impact on water levels during the work. All work is expected to be completed by November 2018.



Water level at the Rabbit Lake dam can be accessed by searching “OPG Matabitchuan River System” or at this weblink:

<https://www.opg.com/generating-power/hydro/northeast-ontario/river-systems/Pages/matabitchuan-river.aspx>

The level is updated weekly.

As of March 29th, water level had yet to bottom out; the logs had not yet been inserted to allow lake levels to start rising.

2016 Financial Statements as Presented at 2017 AGM

August 6, 2017

Dave Bellemore, Treasurer

CALA FINANCIAL REPORT
FISHING ACCOUNT

January 1, 2016 - December 31, 2016

BALANCE FORWARD, FISHING ACCOUNT, as at January 1, 2016 \$ 768.68

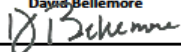
INCOME		
Boat Poker Run Profits (2016)	\$ 582.00	
Total Income	\$ 582.00	

EXPENSES		
Bank Service Charges	\$ 23.40	
Total Expenses	\$ 23.40	

SURPLUS (excess of income over expenses)	\$ 558.60	
(\$582.00 - \$23.40)		

ENDING BALANCE, FISHING ACCOUNT, as of December 31, 2016 \$ 1,327.28

Respectfully Submitted
20/05/2017
CALA Treasurer
David Bellemore



CALA FINANCIAL REPORT
GENERAL ACCOUNT

January 1, 2016 - December 31, 2016

BALANCE FORWARD, GENERAL ACCOUNT, as at January 1, 2016 \$ 1,782.58

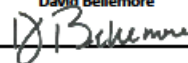
INCOME		
Membership Dues (2016)	\$ 2,975.00	
Donations	113.00	
Silent auction	350.00	
Miscellaneous income	85.00	
Advertising	845.00	
Special grant- Buoys/Markers project	4,104.92	
Total Income	\$ 8,472.92	

EXPENSES		
Corn Roast costs - 2016	\$ 346.02	
FOCA Dues	355.75	
Liability Insurance	1,119.96	
Newsletter, Roster, Website Related Costs	500.99	
Bank Service Charges	47.65	
Special project - Water testing fees	70.63	
Special project - Buoys/Markers related costs	3,560.86	
Total Expenses	\$ 6,001.86	

SURPLUS (excess of income over expenses)	\$ 2,471.06	
(\$8,472.92 - \$6001.86)		

ENDING BALANCE, GENERAL ACCOUNT, as of December 31, 2016 \$ 4,253.64

Respectfully Submitted
20/05/2017
CALA Treasurer
David Bellemore





Following up on Chris's important report; while it seems that for the moment CALA lakes are in pretty good shape, we all have a vested interest in maintaining the health of these lakes. It is also important to recognize that our lifestyle choices can contribute positively and negatively to the health of these lakes.

FOCA (Federation of Ontario Cottagers' Association) published a booklet in 2011 which can be viewed or printed from their website. It's called "A Shore Owner's Guide to Healthy Waterfronts."

www.foca.on.ca/shoreline-owners-guide-to-healthy-waterfronts-2011-edition

Not all of the info is applicable to CALA lakes, but it is a comprehensive collection of waterfront issues, facts and suggestions.

As we make our 2018 cottage shopping list, one simple thing we can all do to keep phosphorous levels as low as possible is by purchasing and using phosphate-free detergents, personal care and household cleaning products. There are now more of these alternatives on our grocery shelves.

Every little bit helps!

PM

MEMBERSHIP REPORT

Hopefully you all received the renewal form for your 2018 CALA Membership which was sent out in January. Eighty five forms were sent out, and approximately 50% have been returned so far. Thank you to all who have submitted their annual fees. If you haven't sent yours in yet, I shall look forward to receiving it soon.

Greg Feys,
Membership Director

COMMUNICATIONS REPORT

As I step into the role of communications director, I am working on building an up-to-date email address bank so that we can get our newsletters and important information notices out to all members. If your email address has changed over the past year, please take a moment to send it to me so I can add you to the list.

If you know of any significant Milestones for our next newsletter (Summer 2018), keep us in mind, i.e. when you reach an earth-shattering birthday or anniversary or joyfully welcome a new child (or grandchild) to your family circle for example.

I can be reached at psmiddleton@ontera.net, or at my home telephone number of (705)569-2586. Alternatively, text to my cell phone (705)948-0075. Look forward to hearing from you ☺

Paul Middleton
Communications Director



IMPORTANT NEWS



Fine and Probation for Fishing Violation

You may recall reading about a pair of fishing violations on our lakes in a CALA midsummer email blast last July. One of them was very serious: two anglers were caught in possession of 34 walleye, 26 fish over the legal limit. Worse yet, it was suspected that several of the fish were in the mandatory catch and release slot limit. Allow me to reprint the article here that was in the email last summer:

Violation #2: This violation is much more serious and complex. It involves what is called "STOCKPILING" of walleye. Again, this occurred back in June of 2017. The MNRF and OPP were on a routine patrol (in the same boat)

There were three fishing boats in the same vicinity. The MNRF/OPP interviewed two of the three boats. During this time, the third boat put their boat back on their trailer at the Cassels access and departed. Based on conversations with the two boats that were interviewed, suspicions were raised about the third boat. The MNRF/OPP were able to determine that the anglers in the third boat were staying at Finlayson Point Provincial Park. They were also able to get a description of their vehicle. At 1030 pm that evening, the MNRF/OPP went to Finlayson and spoke with park staff. They were able to establish which camp site the fishermen were staying in and proceeded to conduct an interview with them. That's when they discovered 34 pickerel in their possession. With a one-day possession limit of 4 fish each, or eight total, that meant that these anglers were 26 fish over their possession limit. Charges were laid, and the case is expected to go to preliminary hearing in court in early September 2017. The suspects can then either plead guilty or proceed with a court case. It is hard to say at this time, but the fines are expected to be in the thousands of dollars. The two anglers were fully aware that they were breaking the law.

So that is what you read last July. Well it comes as some consolation that the two anglers, a man and a woman, were indeed fined and placed on probation. Read below the MNRF News Item released last September 18, 2017.

\$5,200 Fine and Probation Orders for Illegal Fishing ***MNRF NEWS, September 18, 2017***

A man and woman from Keene have pleaded guilty to possessing more than the allowable number of walleye, contrary to Ontario's fishing regulations, and have each been placed on probation for two years.

Jeffrey Terry was fined \$5,200 for the offence, while Michelle Terry received a suspended sentence. Under the terms of their probation, both Jeffrey Terry and Michelle Terry received a one-year fishing licence suspension and are prohibited from fishing within 50 kilometres of the Town of Temagami for two years.

Court heard that on June 24, 2017, a conservation officer and two Ontario Provincial Police officers were conducting a joint marine patrol on Cassels Lake near Temagami. A member of the public advised the officers that two people in a boat had been seen fishing on the lake every day for a week. With the assistance of Ontario Parks enforcement staff, the officers located the boat at a campsite at Finlayson Point Provincial Park.

An inspection of the fish in the possession of the two anglers revealed several bags of frozen skinless fish fillets. Once the fish were thawed, a total of 34 walleye were counted – 26 more than allowed. In addition, several of the fish appeared to have been within the protected size for the area.

The fish were forfeited to the Crown and will be donated to a charity.

Justice of the Peace Theodore Hodgins heard the case on September 7, 2017, in the Ontario Court of Justice, Haileybury.

The public is reminded that catch and possession limits are in place to ensure the sustainability of Ontario's fisheries.

To report a natural resources violation, call the MNRF TIPS line at 1-877-847-7667 tollfree any time or contact your local ministry office during regular business hours. You can also call Crime Stoppers anonymously at 1-800-222-TIPS (8477).

Tim Caddel, North Bay Enforcement Unit, 705-475-5596

Pete Gilboe, North Bay Enforcement Unit, 705-647-6988

ontario.ca/mnrf Disponible en français



With the 2018 pickerel season opening less than two months from now, the possibility arises that others may attempt to break the law. The season this year opens on the Saturday of the Victoria Day long weekend, as it has for many years. Yet in years past we usually see boats out fishing in our bay on the Thursday and Friday evenings. This of course is illegal. Rules are rules, and we should all follow them.

Which is why the MNRF is asking for your help in reporting suspicious fishing activity on our lakes. The manpower resources at MNRF are obviously limited; they only have so many Conservation Officers to cover huge areas of lakes and lands. They can either guess where they should be, or they can follow our leads. There are several ways in which we can report suspicious fishing activity:

Call or local Conservation officer, Peter Gilboe
New Liskeard, direct office number 705-647-6988
MNRF 24/7 Report Line: 1-877-TIPS-MNR (1-877-847-7667)
Crime Stoppers for complete anonymity 1-800-222-TIPS

CALA strongly advises you to ensure your fishing licence is current and that you know what your legal possession limits are.

Peter Olynyk
Past President, CALA

SEEING THE FOREST FOR THE TREES

TEMAGAMI FOREST MANAGEMENT PLAN – 2019 to 2029

Update and Climate Change Considerations

[Article by Mr. Etienne Green of First Resource Management Group
provided to CALA newsletter by John Kenrick, Temagami Area LCC representative]

As awareness to climate change and its global impacts increase, questions are being asked about how forest managers are preparing for it at the local level. The Long-Term Management Direction (LTMD) of the 2019-2029 Temagami Forest Management Plan was made available for a 30- day public period starting November 8th 2017. The Long-Term Management Direction for the Temagami Management Unit is preparing for climate change by increasing the forest's *resiliency* over time and by *mitigating* climate change's impact through forest management activities.

This objective is consistent with Ontario's Climate Change Strategy, which sets the goal of increasing the resilience of natural areas at the landscape, ecosystem, and species level. A healthy forest is a resilient one, and a resilient forest can adapt to change better than an unhealthy or unbalanced one. This direction come from the Forest Management Guide for the Great Lakes-St Lawrence Landscapes. This Guide is the primary guide applied in the development of the 2019-2029 Temagami LTMD.

The guide describes the pre-settlement condition based on historical records and mathematical modelling of how forest will grow and transition through time (age and species) in the absence of human influences. Ultimately, the guide provides forest managers with target ranges of forest compositions (age and species) to achieve in the short, medium and long term for each management unit across the province. As such, one of main objectives of the Temagami LTMD is to create a future forest condition that is within the lower and upper ranges of natural variation provided by the guide.

The planning team has found that the condition of the forest in 2019 is considerably different than that described by the natural ranges. Active fire suppression has minimized the forest area from being able to naturally create young forest. It has also allowed for forest succession to occur in greater rates and lengths of time. As such, the forest has a disproportionately high amount of area with older trees and fewer area younger vegetation. It also has a disproportionately high amount of forest area in spruce/fir/cedar or mixed wood and fewer forest area in pine dominated forest types when compared to the natural ranges. The imbalance in the year 2019 ultimately makes the forest less *resilient* because the range of forest conditions has shifted over time due to prolonged periods of little natural and artificial disturbances. As climate changes continues to apply stress to the forest landscapes, it will be increasingly important for them to have a balance of age and species. As a result a strategy of the Temagami LTMD is to uses harvest and regeneration of forest area to create a future forest condition more resilient and adaptive.

The harvesting, manufacturing of wood products and regeneration of forest also mitigates climate change impact. Plants, and soil naturally store and release carbon over time. As trees grow, the carbon from the atmosphere is stored in the biomass that accumulates in the roots, trunk, branches, and foliage of a tree. Biomass accumulation in trees peaks in the growing years through to maturity. Afterwards, the amount of live tree biomass plateaus and eventually begin to decline as mortality and succession sets in. Live tree biomass becomes dead biomass and the decay of this biomass leads to some carbon storage in the soil and a slow release of carbon into the atmosphere. During this period, an immature forest will establish itself and accumulate new live biomass that will cause a repeat of the growth, peak, and decline cycle. Forest fires lead to an immediate release of carbon, but will also lead to the regeneration of a young forest which can then repeat the cycle once again. Minimizing the net release of carbon and increasing the net uptake of the carbon, is how forest management contributes climate change mitigation. Every ton of wood that ends up a product such as lumber or paper is sequestered for the life of that product. A simple 2x4 can be used in a home for generations before it is returned to the carbon cycle is addition it may replace another building material with higher carbon outputs. Forest management activities that maintain or increase forest carbon stocks and produce an annual sustained yield of timber, fibre, or energy from the forest to be the largest sustained form of mitigation for climate change ((Ter-Mikaelian et al. 2008, Intergovernmental Panel on Climate Change (IPCC 2007). Ultimately, harvesting and regenerating forest according to the natural ranges will create a more resilient and adaptive forest while mitigating climate change impact.

Harvest, renewal and tending operation for the 2019-2029 FMP are scheduled according to the first ten years of the LTMD.

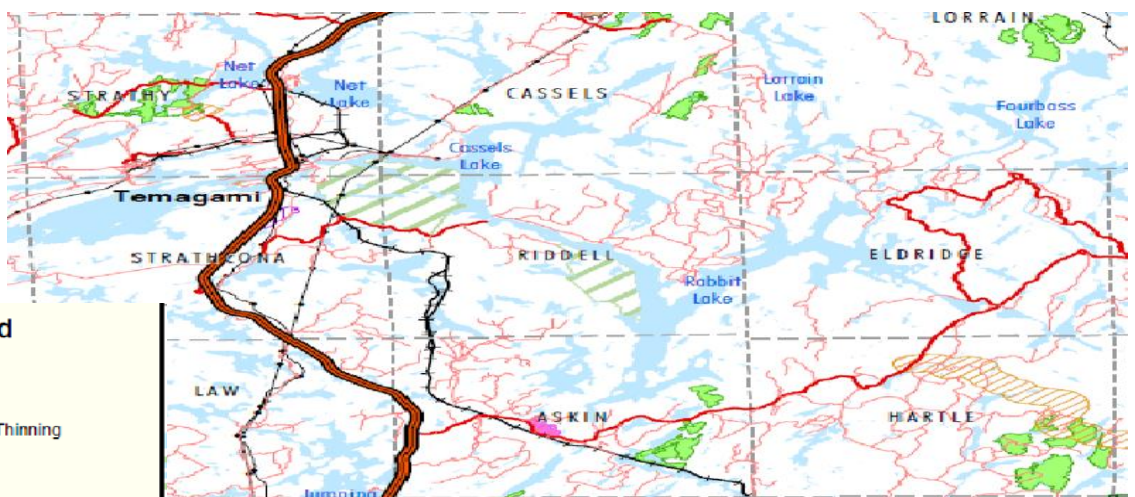
The Review of Proposed Operations: Information Centre will be held at the following locations:

April 16, 2018 (4:00 – 8:00 PM) at the Temagami Community Centre & Arena
100 Spruce Drive, Temagami, ON P0H 2H0

April 17, 2018 at the New Liskeard Golf Clubhouse
804027 Golf Course Road, New Liskeard, ON P0J 1P0

The following information may be obtained at the information centre:

- Summary of the MNRF Regional Director preliminary endorsed long-term management direction; and
- Summary map(s) of:
 - The planned areas for harvest, renewal and tending operations for the ten-year period of the plan; and
 - The proposed corridors for new primary and branch roads for the ten-year period of the plan.



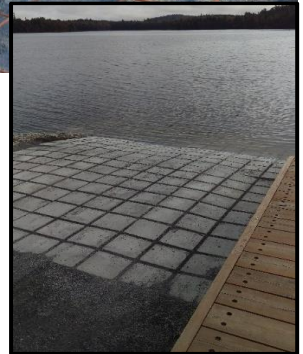
Legend

- Harvest Area
- Fuelwood Area
- Pre-Commercial Thinning
- Planting
- Seeding
- Site Preparation - Mechanical
- Site Preparation - Chemical

Municipal Update

This past fall, the Municipal crews worked on and completed a new boat ramp at the Rabbit Lake, South access point.

This was part of an ongoing project, that followed up the Net Lake boat ramp located at the Arena in Temagami North.



New precast boat launch ramp at Net Lake.

ONR worked on repairing the railway crossing on Rabbit Lake road on September 17, 2017



Health WARNING!

Sudbury health unit warns about rare infection

By Sudbury Star Staff

Thursday, June 29, 2017 5:54:21 EDT PM

The Sudbury and District Health Unit issued a warning Thursday about exposure to a fungus-caused infection that, if left untreated, could prove fatal.

Blastomycosis is a rare infection caused by breathing in the fungus *Blastomyces dermatitidis*, the health unit said in a release. Activities that disturb damp soil or rotting wood, such as digging or raking, may release the fungus into the air.

The fungus is found in moist acidic soil in parts of Northern Ontario, Manitoba, Saskatchewan, Quebec as well as other areas around the Great Lakes and Mississippi Valley.

"If you have a persistent cough, muscle aches, joint pain, tiredness, chills, low-grade fever, skin sores or unexplained weight loss, let your health care provider know that you may have been exposed to the fungus that causes blastomycosis," said Rylan Yade, an environmental support officer at the health unit.

"They will want to know if you have been in a high-risk area and in contact with moist soil."

Although this is a rare infection, it is important to know how to reduce exposure to the fungus when working in moist soil areas, such as under the house, cottage, porch, or shed. Simple precautions include wearing work gloves, proper footwear, long pants, long-sleeved shirts, and a disposable NIOSH N100 approved HEPA filter dust mask.

The symptoms of blastomycosis can be similar to those of influenza or pneumonia.

People typically become sick 21 to 100 days after being exposed to the fungus. If the infection is left untreated, blastomycosis may be fatal.

For more information on blastomycosis, call the health unit at 705-522-9200 , ext. 398, toll-free 1-866-522-9200 , or visit www.sdhu.com.

sud.editorial@sunmedia.ca



On behalf of CALA, we would like to take a moment to THANK all of our WONDERFUL donors for prizes and Silent Auctions items at our 2017 AGM & Corn Roast. We couldn't have such a great event without your support!

MANY THANKS to....

- ★ Temagami Marine
- ★ Gramp's Place
- ★ Home Hardware, Temagami
- ★ Temagami Water Systems
- ★ Peacock Wood Furniture & Garden Centre
- ★ Northland Traders
- ★ Temagami Boat Livery
- ★ Our Daily Bread
- ★ Docks Plus
- ★ Temagami Chamber of Commerce

- ★ Stillwater Living & Designs (Julie Blondin c/o Rabbit Lake)
- ★ Peter & Sue Olynyk
- ★ David Salari (D.E.N.M. Engineering)
- ★ Judy Olynyk
- ★ Chris D'Aoust
- ★ William Houghton c/o The Beer Store
- ★ Mike & Shiela Benallick
- ★ Kaye Barrett
- ★ Paul & Sara Middleton
- ★ Tim McBride

Cindy Dougall,
Community Liaison/Events Director

NEW TO CALA NEWSLETTERS!

We are offering a new feature for our CALA newsletter....classified ads! A great way to promote items you have for sale on the lake to other lake residents. You could have buyers boating right to your dock to pick up the items you have listed A great way to make room at the cottage!

CLASSIFIED

Ads

WHAT YOU NEED TO KNOW:

- Ads cost **\$5 EACH**, but run thru until the fall newsletter / end of season
OR until the item is sold
- payments for the ad (\$5) can be made directly to any CALA director, or through e-transfer
 - Ads will be for one item only. Max 3 pictures per ad
 - NO pets or firearms
- You must include *your* contact information for buyers to made arrangements with you directly (phone, email, etc..)
- contact Cindy Dougall (cindy.dougall@fibreop.ca) for more information, or to place your ad today!

(** CALA takes no responsibility for the quality, safety or longevity of any items sold)



YOUR 2017-2018 CALA EXECUTIVE

PRESIDENT	Sue Olynyk	susanolynyk@gmail.com
PAST PRESIDENT	Peter Olynyk	pwolynyk@gmail.com
VICE PRESIDENT	OPEN POSITION	
SECRETARY	Adrian Cobbold	adrian.cobbold@gmail.com
TREASURER	Dave Bellemore	dbellemore@turnermoore.com

DIRECTORS:

FORESTRY	Donna MacIntyre	macintyre.amrhein@gmail.com
FISHING	Daryl Bell	one_alpha_wolf@outlook.com
WATER QUALITY	Chris D'Aoust	chris.daoust2@rogers.com
WATER MANAGEMENT	Sue Olynyk	susanolynyk@gmail.com
MEMBERSHIP	Greg Feys	gfeys@ciaccess.com
COMMUNICATIONS	Paul Middleton	psmiddleton@ontera.net
COMMUNITY LIAISON/EVENTS	Cindy Dougall	cindy.dougall@fibreop.ca

CALA'S MISSION STATEMENT

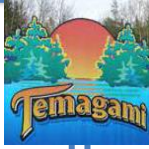
CALA is committed to conserving the natural beauty of the Cassels and Adjoining Lakes region of Temagami and to sustaining the quality of life for this and future generations. CALA will preserve this commitment by promoting a clean & safe environment, supporting programs that will protect and enhance our fisheries and natural resources, collaborating and communicating with officials, organizations and associations to further develop our region's splendor and to acquire information that will facilitate reliable and informative communications to its members, and by organizing social activities to enrich member relations and to foster growth and involvement within the Association.



Community Info – 2018

TEMAGAMI PUBLIC LIBRARY SUMMER HOURS

Phone: 705-569-2945



Mon. – Thurs. 1 – 5 pm 7 – 8:30 pm
Friday 10 – 12 noon 2 – 5 pm 7 – 8:30 pm
CLOSED Saturday and Sunday

BANK OF NOVA SCOTIA

Tues & Thurs. 10 am – 6 pm

STRATHY WASTE DISPOSAL SITE

300 Milne-Sherman Road

Year-round Hours

Wed, Thurs, Fri, Sat 8 am – 12 noon

Summer months (May long weekend to Labour Day) Sunday 10 am – 2 pm

Winter months

Sunday 8 am – 12 pm

SISK WASTE DISPOSAL SITE

3232 Hwy. 11, Marten River

Wed., Thurs., Sat. 1:00 pm – 4:30 pm

Summer Months: Sunday 3:00 pm – 6:30 pm

Winter Months: Sunday 1:00 pm – 4:30 pm

HAZARDOUS WASTE

112 Patton Street, North Bay

OPEN: Wed., Thurs., Fri., Sat.
8:00 am – 6:00 pm

CLOSED Mon, Tues., Sun.

Website: cityofnorthbay.ca/cityhall/department/environmental-services

TEMAGAMI MEDICAL CENTRE & FAMILY HEALTH TEAM

17 O'Connor Drive

705-569-3244

Office Hours: Mon. – Thurs. 8:30 am – 12 noon
1:00 pm – 5:00 pm

Friday - subject to availability of health care provider

Telephone Hours:

Mon. – Thurs. 9:00 am – 12 noon 1 – 4:00 pm
Friday 9:00 am – 12 noon

TEMAGAMI FITNESS CENTRE

AT MEDICAL CENTRE

705-569-3244

See website for further details:

www.temagami.ca

POST OFFICE HOURS

Mon., Tues., Wed. 9 – 1:30 pm 2 – 5:00 pm

Thursday 10 – 1:30 pm 2 – 6:00 pm

Friday 9 – 1:30 pm 2 – 5:00 pm



WIRELESS INTERNET

- ❖ Temagami Public Library
- ❖ Parking lot of Temagami Tower

OUR DAILY BREAD GROCERY STORE

Monday to Saturday 8:00 am – 6:00 pm

CLOSED Sunday

OPENS for season - May 1, 2018

HOME HARDWARE

Phone: 705-569-3300

Mon – Friday 8:00 am – 4:00 pm
Saturday 9:00 – 1:00 (starting May 19)

